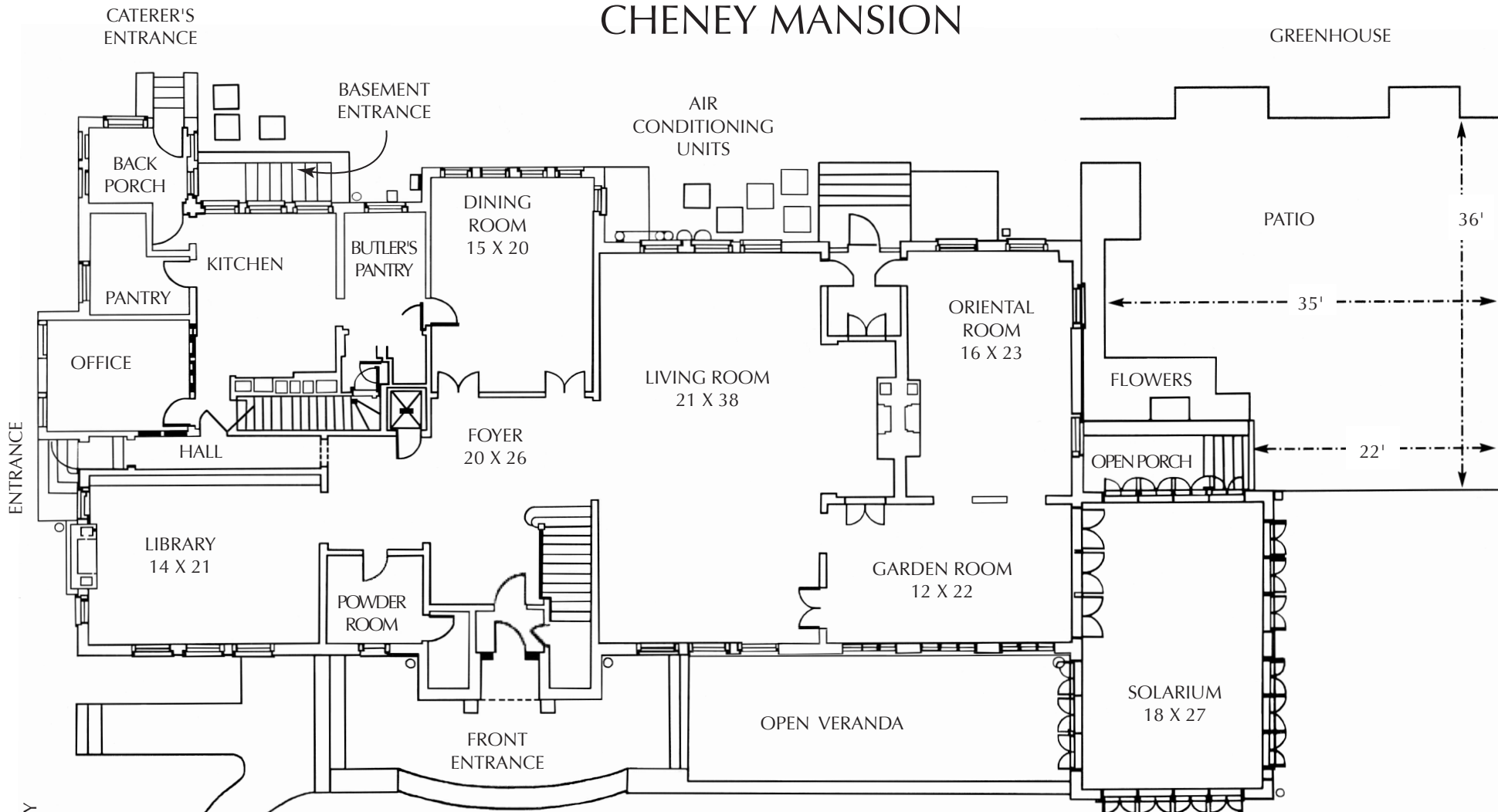


CHENEY MANSION



PLEASE INDICATE ROOMS TO BE USED WITH THE NUMBER OF TABLES

Seating Capacity for Each Room	
Library	1 - 60" Round Table Plus 1 - 48" Round Table
Dining Room	2 Round Tables
Living Room	8 Round Tables (sit down)
" "	6-7 Round Tables (buffet service)
Oriental Room	2 Round Tables
Garden Room	2 Round Tables
Solarium	3 Round Tables

Maximum of 15 - 60" Round Tables may be set up in the house for maximum seating capacity of 150

House Equipment Includes:

- 10 - 60" Round Tables (10 places per table)
- 4 - 8' Rectangular Tables
- Cheney Mansion Equipment May NOT Be Used Outdoors

Bars may be set up in the Garden Room, Solarium, on the Patio and the Front Veranda
 Food Stations may NOT be set up in the Library nor Oriental Room